

W LUM



**LUMENIA
INDUSTRIAL**

With its high grade of protection against dust, contamination and water permeation, W LUM LED light is a perfect solution for illuminating spaces with dusty and humid environments. It offers extremely high lighting efficiency and excellent light uniformity.



	W LUM				
System efficacy	Up to 145 lm/W				
Supply voltage	220-240 VAC				
Power	19 W	22 W	28 W	39 W	46 W
Luminous flux	Up to 2,605 lm	Up to 3,105 lm	Up to 3,900 lm	Up to 5,200 lm	Up to 6,670 lm
Body type	W LUM 1	W LUM 2	W LUM 2	W LUM 2	W LUM 3
Weight	1.17 kg	1.49 kg	1.49 kg	1.49 kg	2.13 kg
Lifetime L70B10	> 50,000 h				
CCT	4,000 K				
CRI	≥ 80				
Photobiological risk	Risk group 0				
Ingress protection	IP 66				
Operating temperature	-20 °C to +35 °C				
Electrical / Appliance class	Class I				
Colour	RAL7035				
Remote control options	DALI (Optional)				
Housing material	PMMA				
Mounting	Pendant or surface mounting				
Warranty	5 years				
Certificates	CE, ENEC				

 System efficacy	 Long lifetime	 Energy saving product	 Protection class
 Ready to use	 Supply voltage	 Low maintenance	 Spotless
 Easy mounting	 Made in EU	 CE certificate	

MAIN FEATURES

High grade of protection IP66
High system efficacy
Quick access to connectors

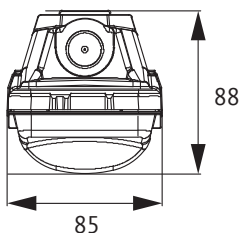
APPLICATIONS

Garages
Production facilities
Workshops
Corridors

ACCESSORIES

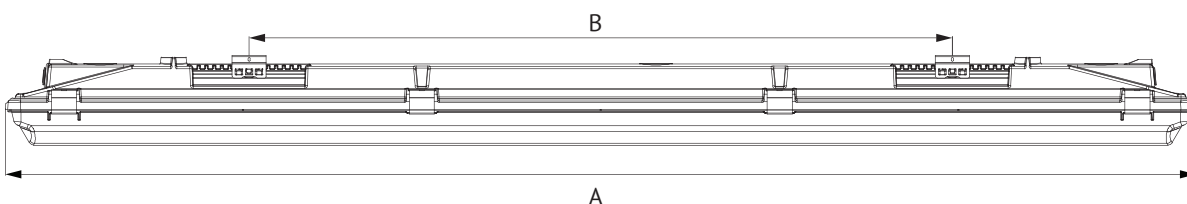
Mounting bracket

DIMENSIONS

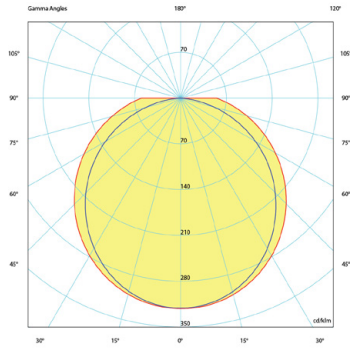


SIZES	W LUM 1	W LUM 2	W LUM 3
A	605	1185	1477
B	238	700	1000
KG	1,17	1,49	2,13

*All dimensions are in mm.



OPTIC



Angular distribution of luminance.

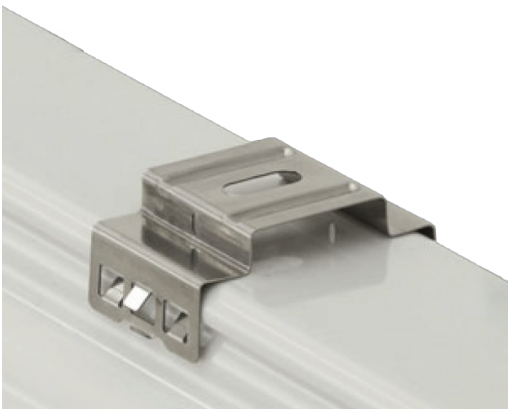
PRODUCT VARIATIONS

Code	Power [W]	Luminous flux [lm]*	Efficacy [lm/W]	Body type
WLUM 19.600	19	Up to 2,605	Up to 137	W LUM 1
WLUM 22.1200	22	Up to 3,105	Up to 141	W LUM 2
WLUM 28.1200	28	Up to 3,900	Up to 139	W LUM 2
WLUM 39.1200	39	Up to 5,200	Up to 133	W LUM 2
WLUM 46.1500	46	Up to 6,670	Up to 145	W LUM 3

*Luminous flux is valid for CCT 4000 K

The latest validated data is available at www.lumenia.com.

W LUM MOUNTING ACCESSORY



Mounting on the wall or ceiling



Pendant mounting

NOTES
